



# Business Glossary Development Tools and process

Never Stand Still

BRIDG (Business Reporting and Intelligence & Data Governance)

Business glossaries are a critical tool within any university. UNSW systems contain a plethora of terms, all requiring definition, the trick is to get them consolidated and co-located.

Dr. Alex Blagus

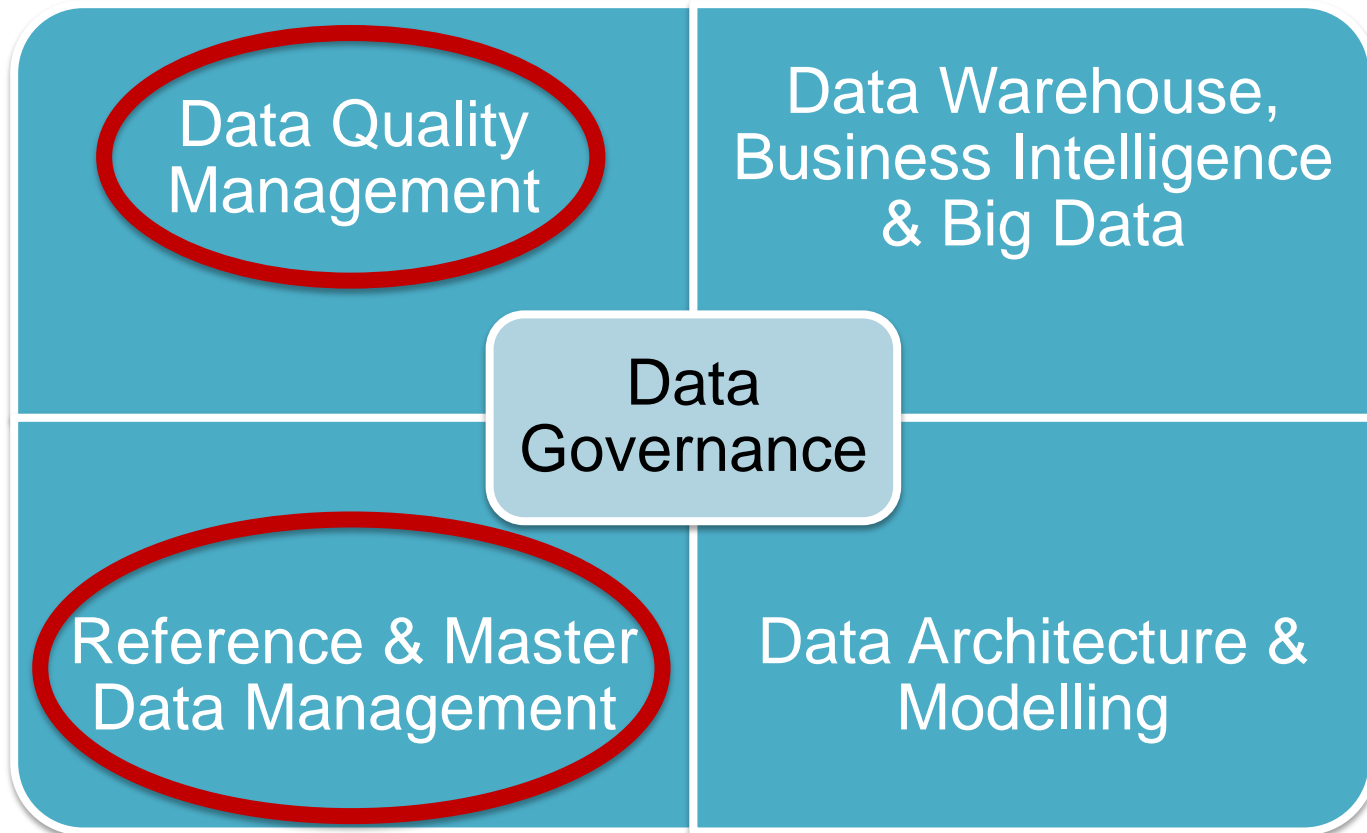
# DATA & INFORMATION GOVERNANCE

## Information Governance

- Appropriate use
- Business value
- Information meaning
- Information Life-cycle
- Information Ownership
- Privacy

## Data Governance

- Data transparency
- Data lineage
- Data Quality
- Data Security
- Change Impact
- Service Levels



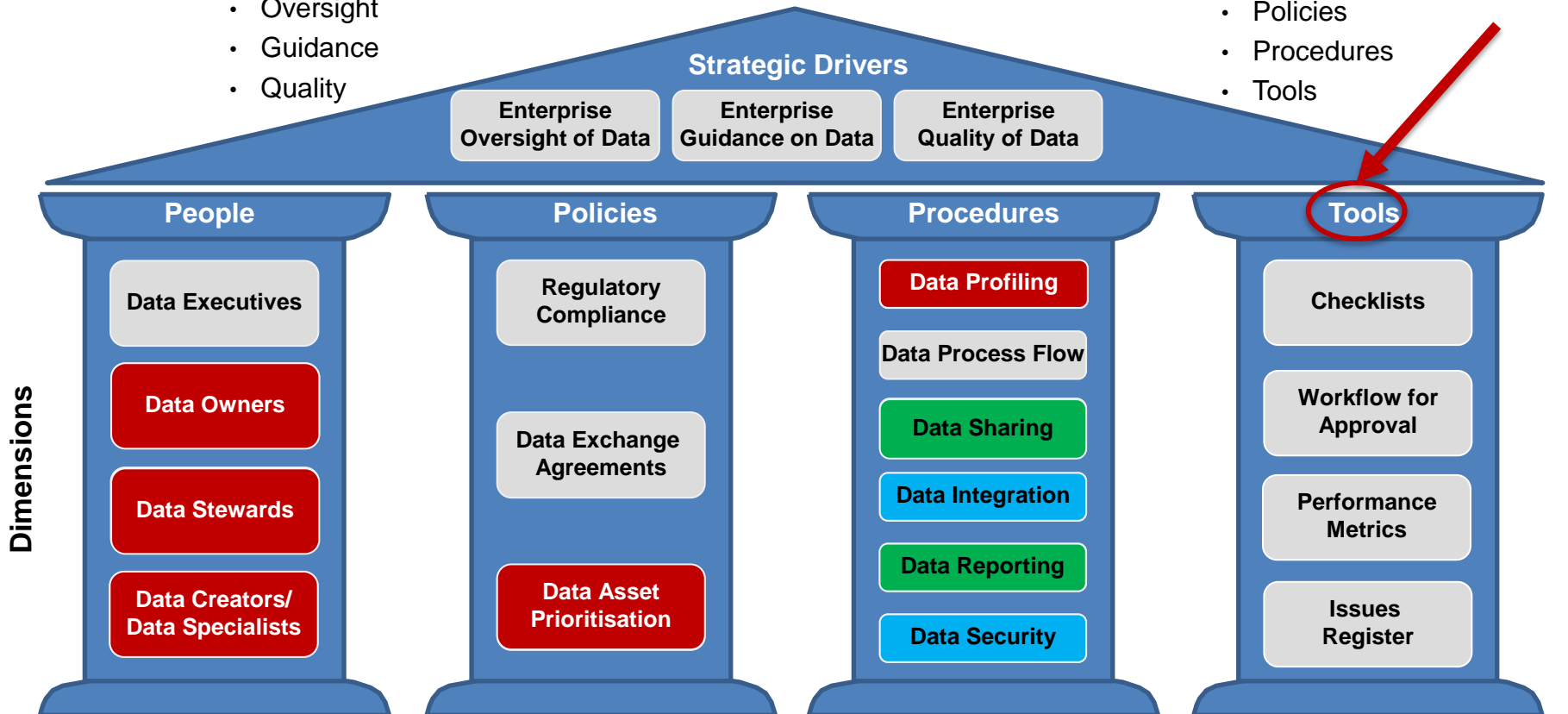
# UNSW Data & Information Governance

## Focus for Enterprise Data Assets

- Oversight
- Guidance
- Quality

## Enablers

- People
- Policies
- Procedures
- Tools



People can be members of UNSW governance bodies, which hold the authority for decision relating to data assets

Policies are high level statements that provide context for strategic decisions relating to the data assets

Procedures are specific instructions designed to ensure policy is followed and outcomes are measurable

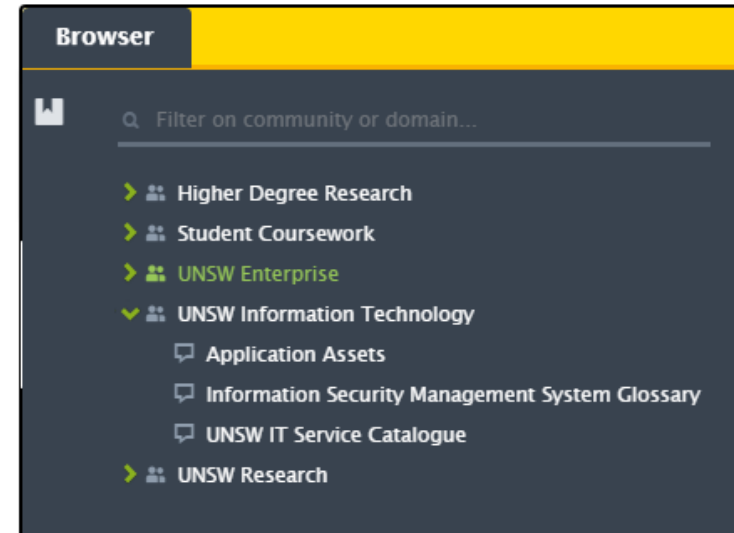
Tools are pre-prepared objects that support people carrying out procedures

# Tools

- Wide Variety
  - Informatica, SAS Data Governance, IBM InfoSphere, Oracle Data Governance
- Collibra
  - Business Semantics
  - Data Quality, Reference Data Management, and Master Data Management

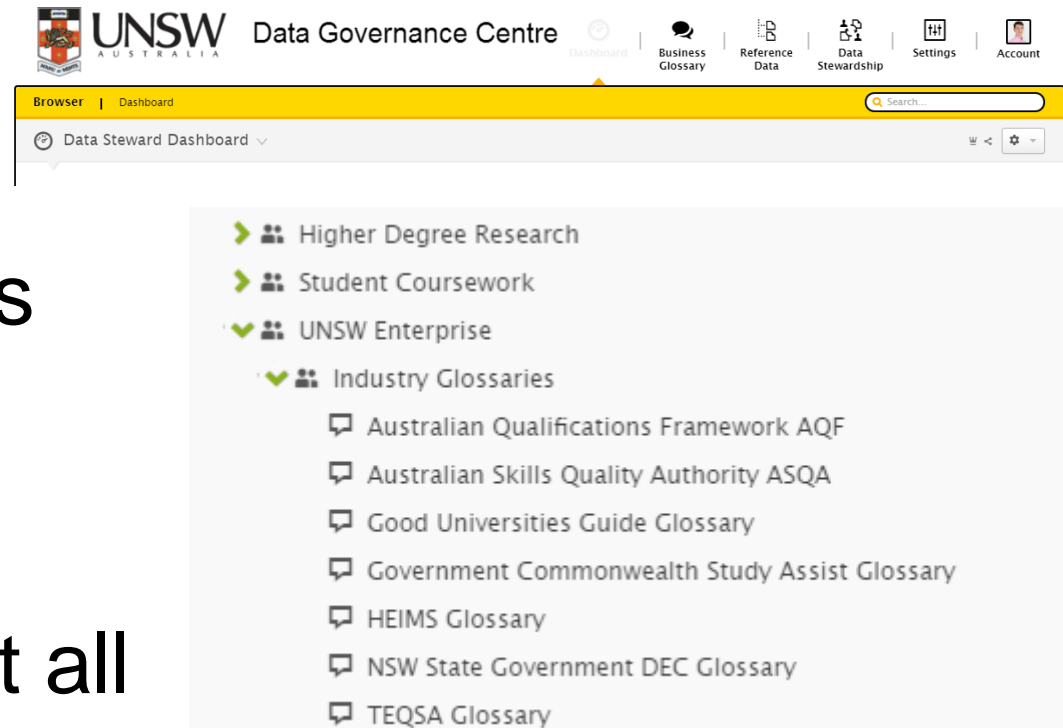
# What's there

- Sources of Terms
  - Government
    - HEIMS, legislation
  - University
    - Staff, Student, IT
  - Systems
    - Finance, HR
  - Local



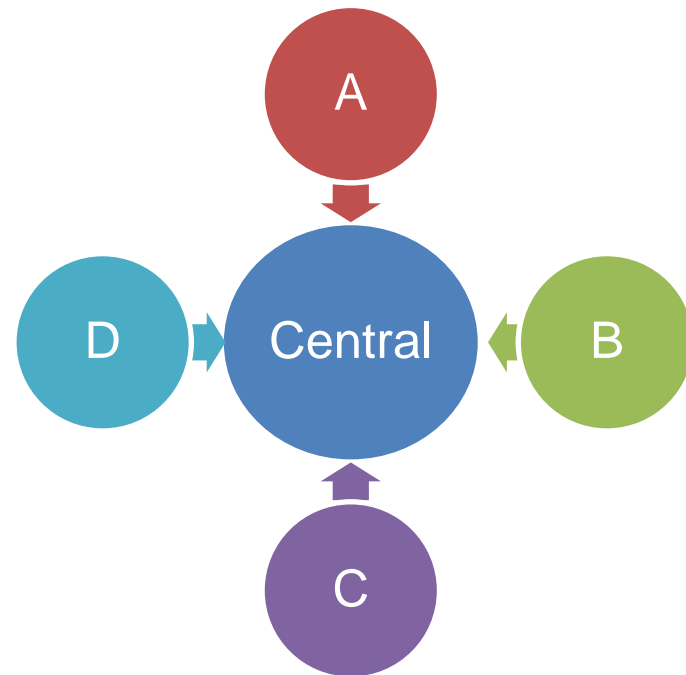
# What's there

- Stocktake
  - 5 domains
  - 17 subdomains
  - 26 glossaries
    - 7 external
- Sorting through it all
  - synonyms



# What's there

- Single sources
  - BI and Reporting
  - CRMs
  - Definitions
- Ownership
  - Terms
  - Definitions



# Glossary Development

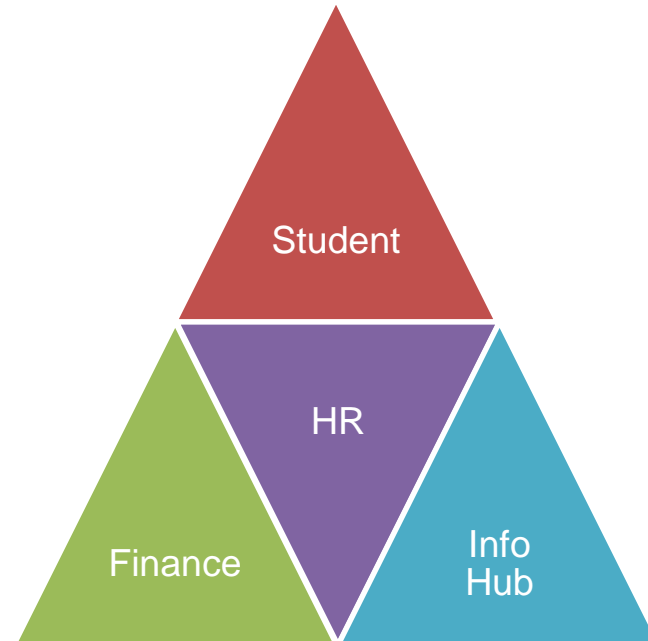
- People
  - Data Executive
  - Data Owner
  - Data Stewards
  - Data Specialists





# Glossary Development

- Where to start
  - ‘Crown Jewels’
  - Processes
  - New Projects



# Student Load Planning Project

- Student Load Planning Tool
  - Project attributes
    - Small
    - Engaged stakeholders
    - Mission critical



**UNSW**  
AUSTRALIA

Student Load Planning



Program Selection



# Student Load Planning Project

- Agile Project
  - 2 week sprints
  - New terms
  - Data Steward/Owner impacts
  - Glossary expansion
  - Facilitation

# Student Load Planning Project Project

- Student Load Planning Tool
  - Project approach
    - New application
    - Business driven
    - Precision terminology



UNSW  
AUSTRALIA

Data Governance Centre

Browser | Student Coursework > Student Administration



Student Load Planning Glossary

Type: [Glossary](#)



Edit



Delete



Discover

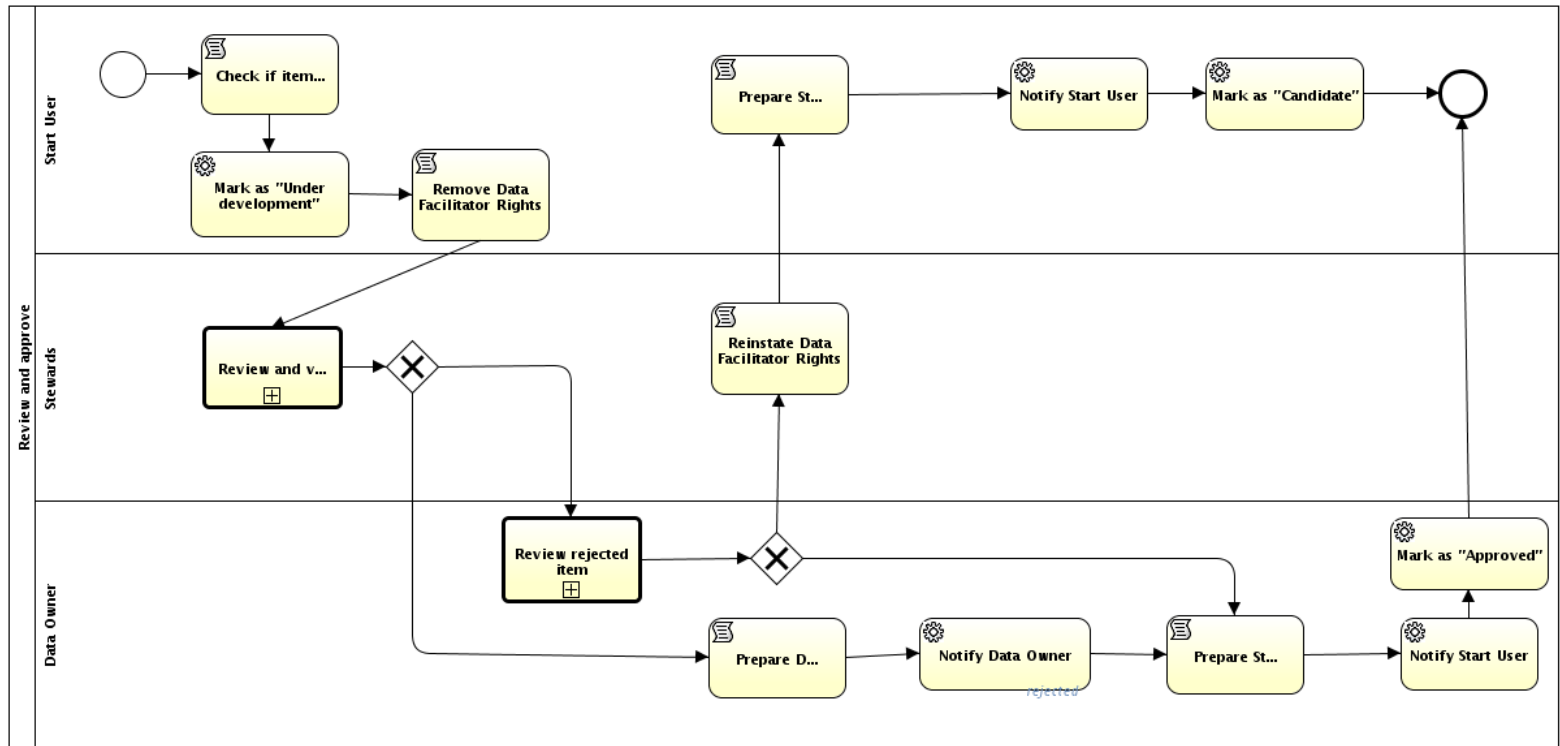


UNSW  
AUSTRALIA

# SLP Project

- Term approval

- Subject Matter Experts
- Process



# SLP Project

- Term collection
  - Assess application
  - Critical Data Elements
  - System terminology
  - Codelists

**Status**  
Type: Code Set    Status: Candidate

5%

Edit    Move    Delete    Req

**Overview**    **Contains Code Value**

+ Add

Hierarchy

Responsibilities

Traceability

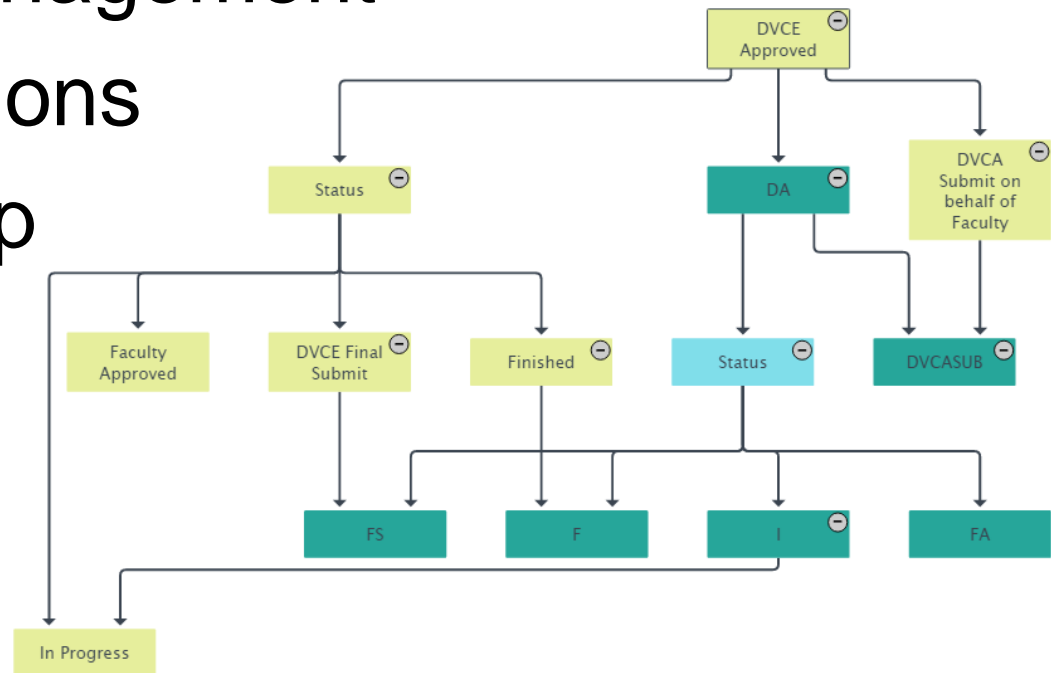
Name ▲	Q
DA	
F	
FA	
FS	
I	

**Grouped by**

Name ▲	Q	Definition	Q
Data Governance Roles		At UNSW there are a number of k...	
		Data Executives	
		Data Owners	
		Data Stewards	
		Data Specialists	
		Data Creator	

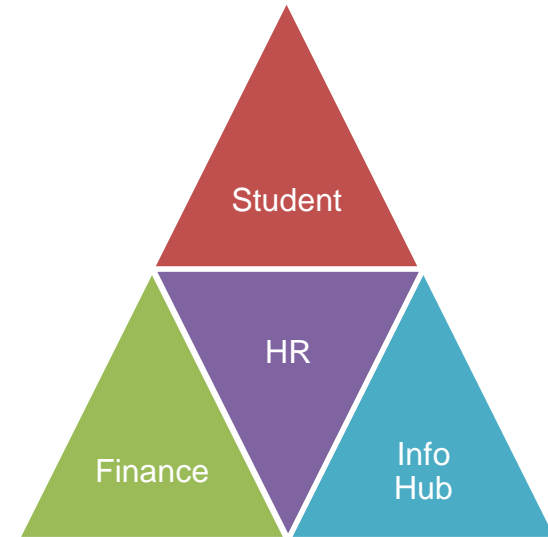
# SLP Project

- Learnings
  - Workflow management
  - Communications
  - Where to stop
    - RDM
    - MDM



# Glossary Management

- UNSW Projects
  - New Projects
  - Data Sharing
- Older Systems
  - Increased data usage
  - Critical Data Elements (CDEs)
  - Metadata Management





# Glossary Management

- Business Intelligence and Reporting
  - *ad hoc*
  - Canned reports
  - Self service

## Info Hub Report Usage REP03

Action		Day Of Week						
		1	2	3	OPEN	5	6	7
		Count	Count	Count	Count	Count	Count	Count
Subtype	Report Name							
CATEI	CATEI Course Evaluation Average Response Dashboard REP01	6	13	22	2	5	9	.
	Commonwealth Appointed Staff FTE by Org Unit REP02	.	1	2	.	.	1	.
	Commonwealth Casual Staff FTE by Organisation Unit REP03	.	1	.	.	.	1	.
	Commonwealth Staff FTE by Organisation Unit REP01	.	1	.	.	.	.	.
	Indigenous by program level REP03	.	8	6	13	7	11	.
CWLTH	Indigenous by year REP01	3	20	11	12	13	7	.
	Indigenous commencing and continuing by year REP02	1	7	5	14	9	2	.
	Indigenous completed and discontinue by faculty REP04	.	11	13	8	12	2	.
	Student DEEWR Master REP06	5	51	41	56	66	56	.
	Student DEEWR Summary REP05	7	32	42	36	50	28	3
	Student DEEWR Teaching Distribution REP07	1	8	11	7	15	11	.
	ETL Validation REP02	.	.	2	1	2	2	.
Common	Job Status REP01	11	12	8	10	13	14	.
	News	.	.	.	6	.	.	.
Total		34	165	163	165	192	144	3

# Thank you

- Questions

Dr. Alexander Blagus (PhD)

Data & Information Governance, BRIDG

T: +61 (2) 9385 0641

E: [a.blagus@unsw.edu.au](mailto:a.blagus@unsw.edu.au)

